



GSA Public Buildings Service

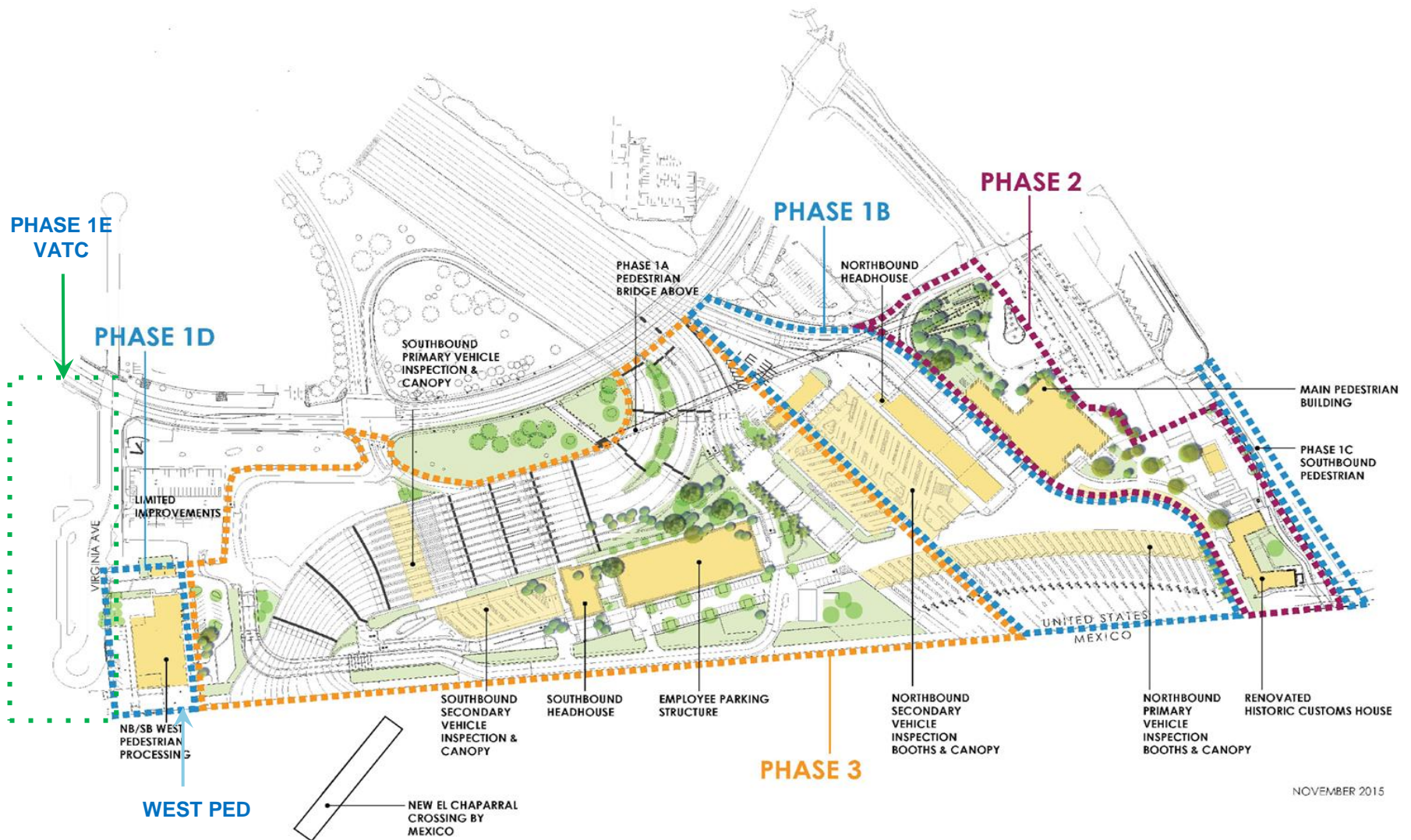
San Diego Regional Briefing

I-5 South Realignment Communications Plan





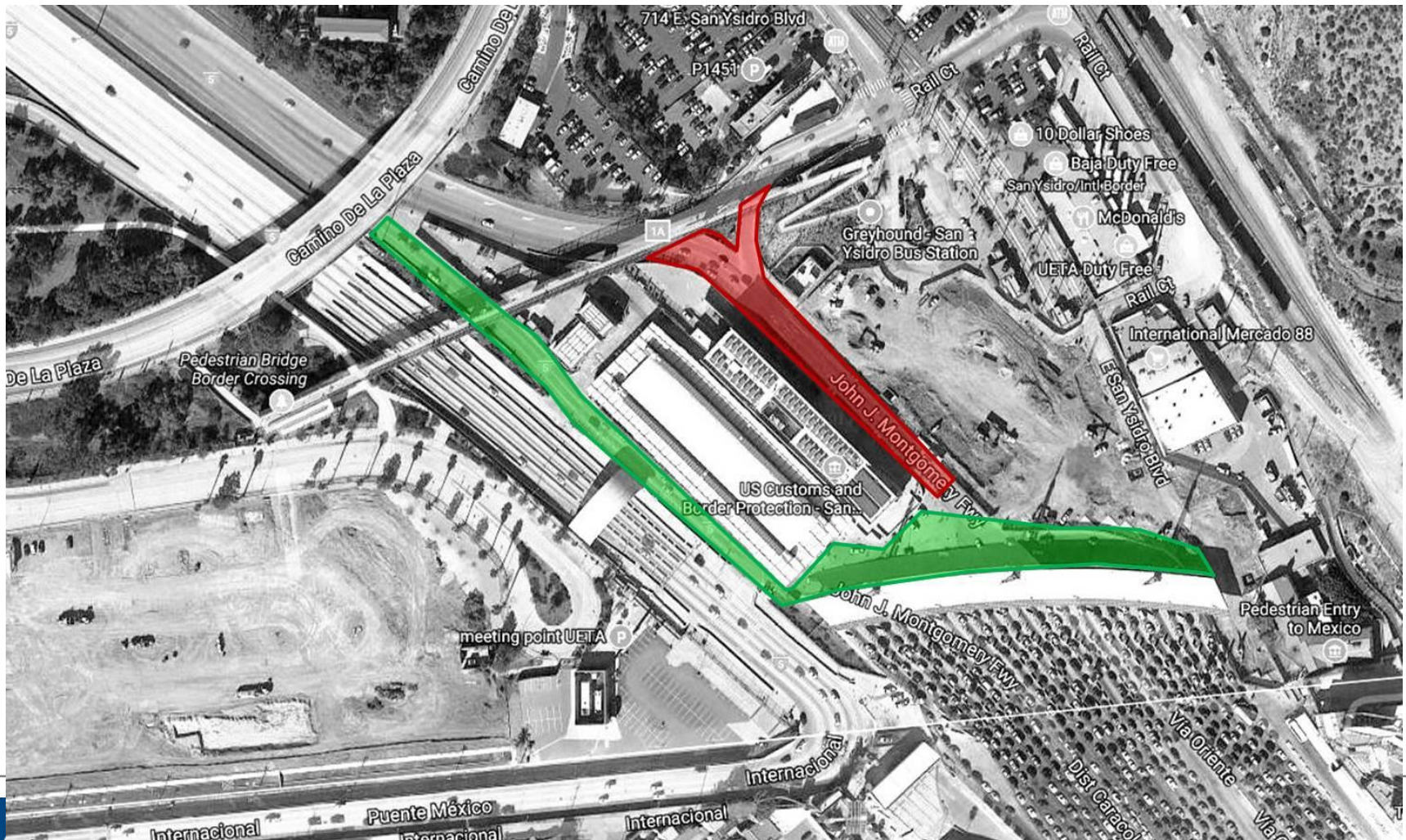
Project Overview



Phase II Project

- **Project includes:**
 - 22 lane Pedestrian and Administration Building
 - Renovation of the Historic Customs House
 - Pedestrian Plaza
- **Planned Impacts:**
 - Four daily 12 hour closures of the eastern most access lanes: **4:00 PM to 4:00 AM**
 - **September 12th to September 16th.**
 - Nightly closures of the eastern access lanes from **10:00 PM to 4:00 AM 9/18/17 through 12/29/17.**

San Ysidro Phase 2 Skybridge Installation Lane Closures



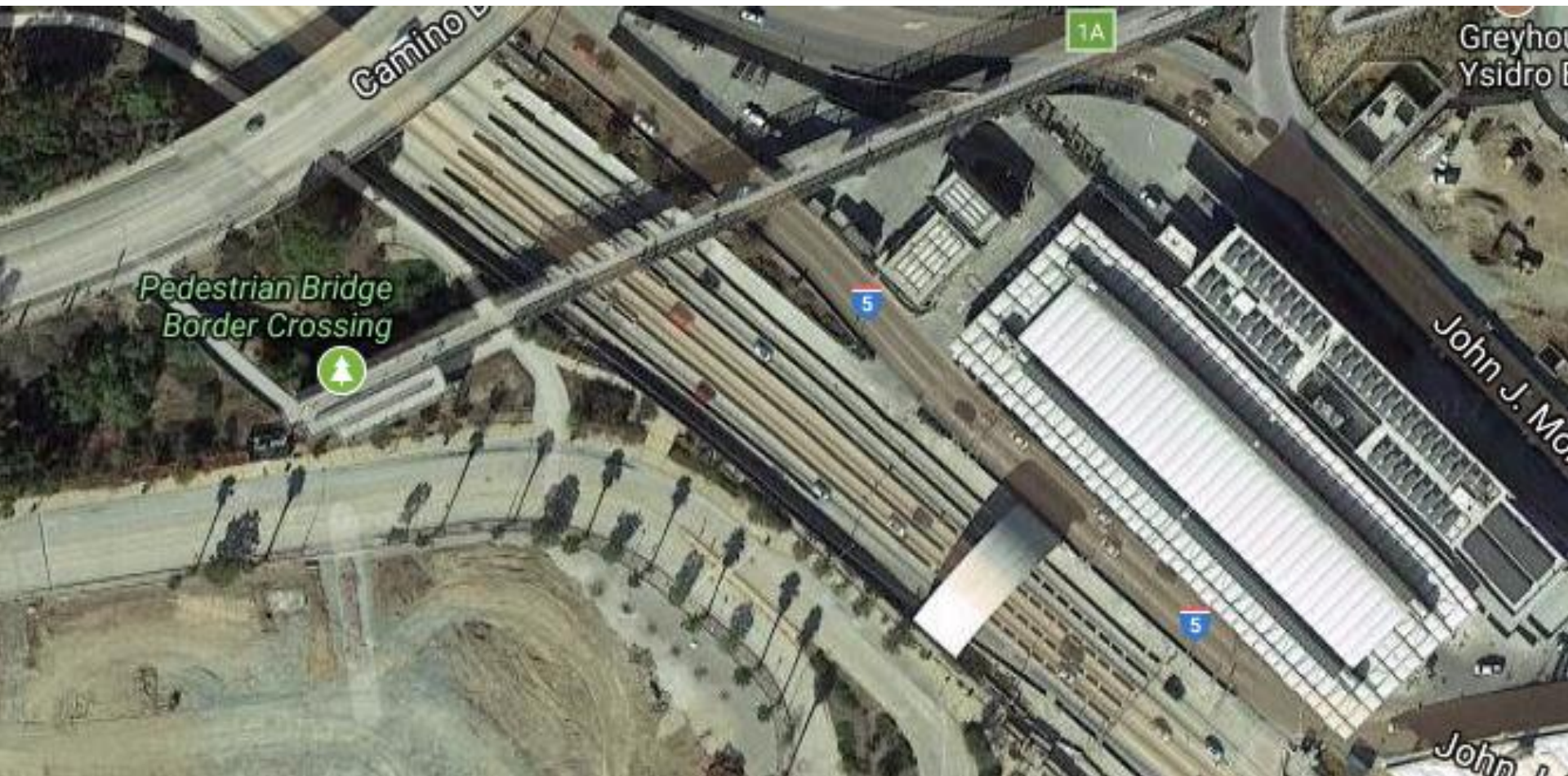
I-5 South Realignment Project

- **Project includes:**
 - 7 construction stages
 - Lane tapering on southbound I-805 & I-5 freeways
 - One complete weekend lane closure (57 hours)
 - Reduction to 3 southbound I-5 lanes for 8 – 9 weeks
- **Duration:** September 2017 - June 2019

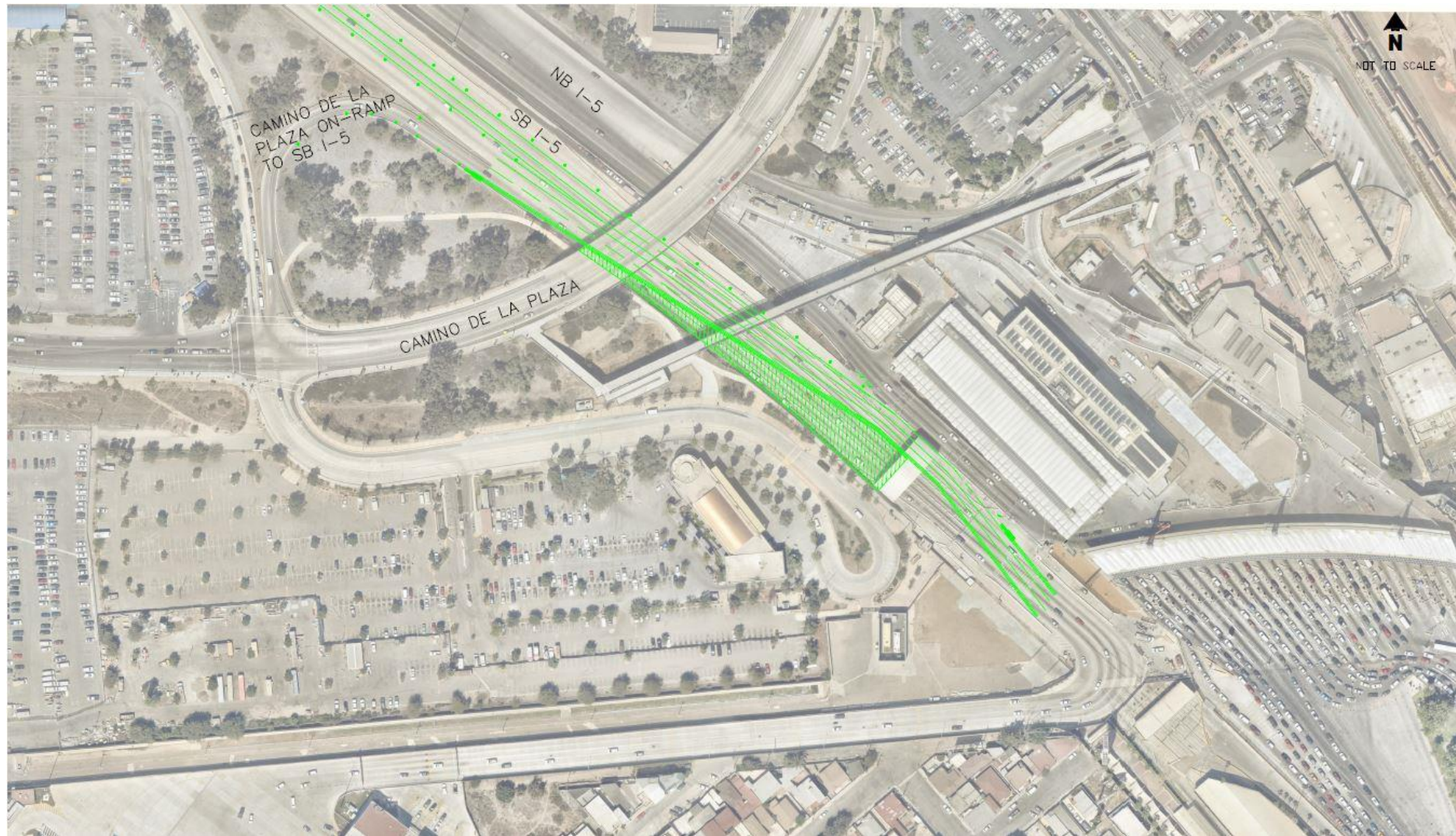
I-5 South Realignment Highlights

- **I-5 S closure at SYLPOE - 57 Hours**
 - Saturday (3 AM) to Monday (12 PM) complete southbound roadway closure; removal of southbound POV inspection canopy. SB POVs advised to use Otay Mesa LPOE
- **Stage 2 - 1 Week**
 - Removal of cast in place lane barriers
- **Stage 3A & 3B - 2 Weeks**
 - Removal of cast in place lane barriers
- **Stage 4 – 8 to 9 Weeks**
 - SB POV lanes tapered down to 3 lanes

Stages 1, 2, 3A, and 3B Overview



Stage 4 Overview



I-5 South Realignment Highlights

- **Stage 5 - 18 Months**
 - Temporary I-5 South realignment and curve are complete and open to the public
 - Number of SB POV lanes increases to four
- **Stage 6 - 1 Month**
 - Connection to permanent I-5 South realignment
- **Stage 7 - 1 Month**
 - New I-5 South connection to permanent infrastructure becomes operational

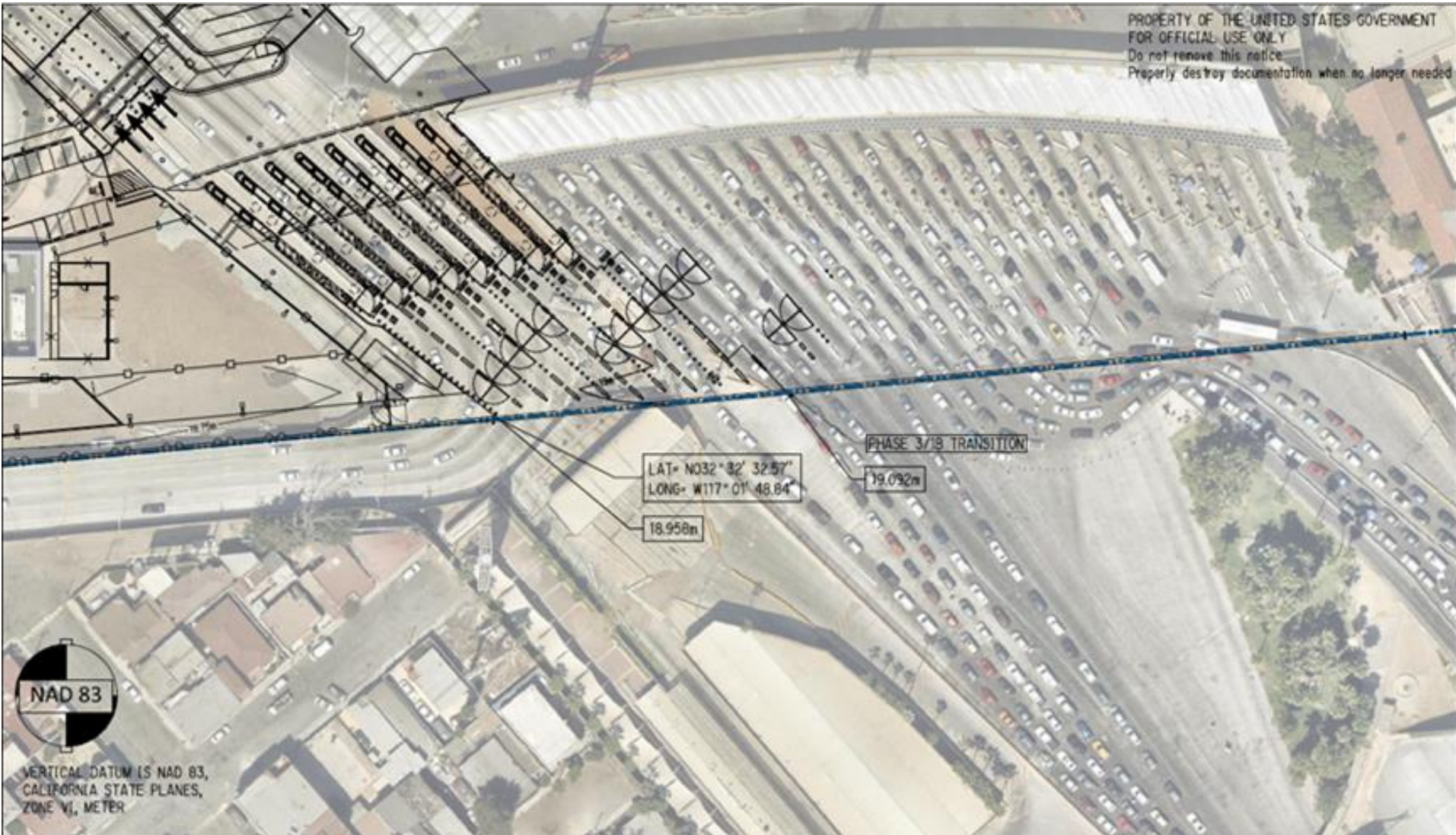
Stage 5 Overview



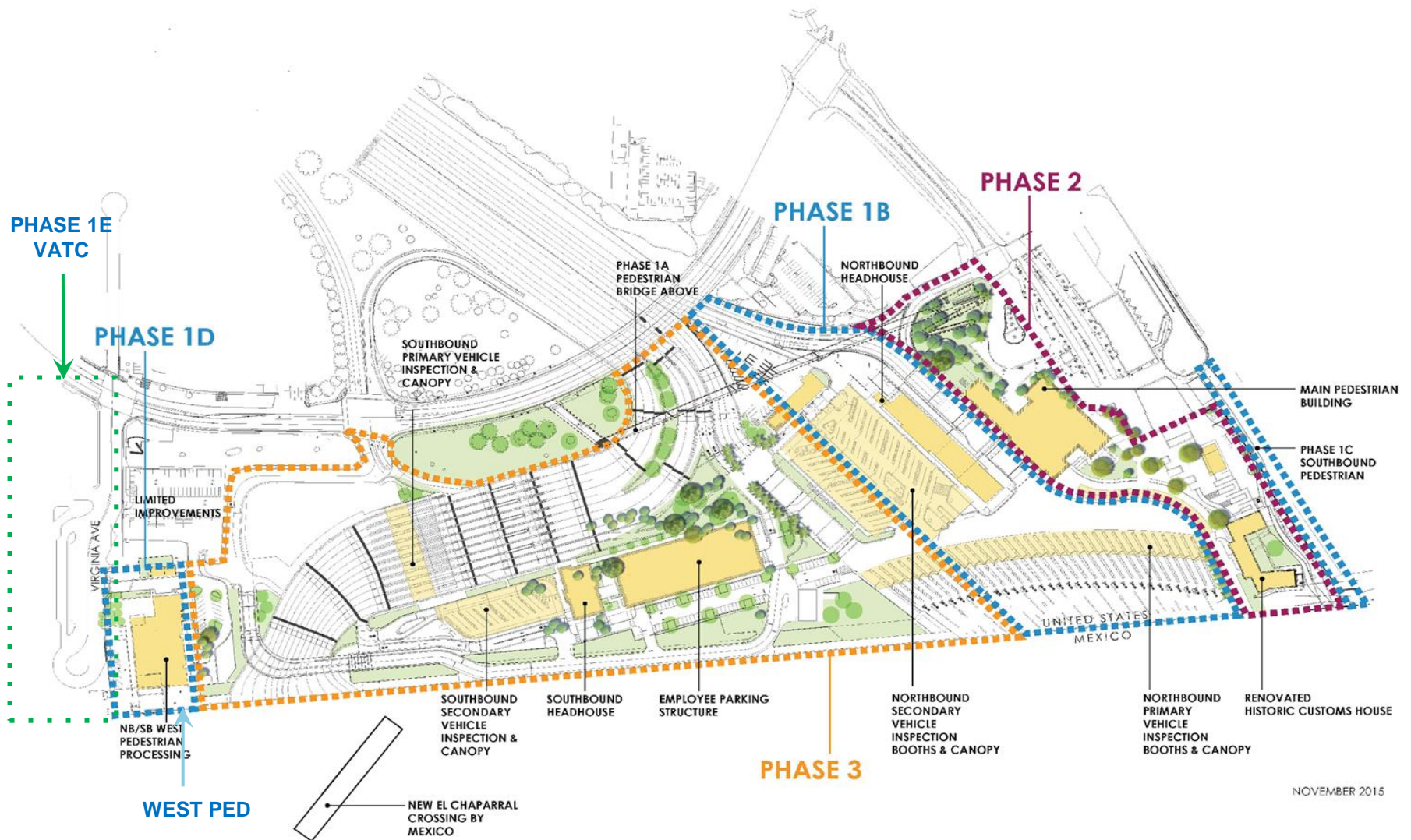
Stage 5 Overview



Project Overview - Additional POV Lanes



Stage 6 and 7 Overview



Critical Communication Elements

Project Benefits:

- Softens curve to El Chaparral
- Expands southbound lanes from 5 to 10
- Facilitates construction of 8 new additional NB POV inspection lanes and 15 inspection booths
- Improved infrastructure and southbound throughput to 19 lanes at El Chaparral

U.S. Communication Partners

- U.S. General Services Administration
- U.S. Customs & Border Protection
- U.S. Department of State / U.S. Consulate in Tijuana
- County of San Diego
- City of San Diego
- City of Chula Vista
- National City
- City of Imperial Beach
- California Department of Transportation (Caltrans)
- San Diego Association of Governments (SANDAG)
- San Diego Metropolitan Transit System (MTS)

Mexican Communication Partners

- Secretaria de Relaciones Exteriores (SRE)
- Consulado General de México en San Diego
- Secretaria de Comunicaciones y Transportes (SCT)
- Instituto de Administración y Avalúos de Bienes Nacionales (INDAABIN)
- Servicio de Administración Tributaria (SAT)
- Instituto Nacional de Migración (INAMI)
- State of Baja California
- City of Tijuana

Communication Channels

- Press Releases
- Media Advisories
- Traffic Advisories
- Fact Sheets
- Stakeholder and Community Meetings
- Social Media Newsfeed Updates
- Respective Agency Websites
- Signage and Posters
- Paid Ads

Stakeholder Outreach

- SANDAG Borders Committee Meeting - June 23, 2017
- Law Enforcement & Emergency Services - July 11, 2017
- Congressional Delegation Briefing - July 13, 2017
- San Ysidro Chamber of Commerce & South Bay Economic Development Council - July 17, 2017
- San Diego Regional Chamber of Commerce - July 18, 2017
- SMART Border Coalition - July 24, 2017
- Otay Mesa Chamber of Commerce - July 25, 2017
- SANDAG Borders Committee - July 28, 2017
- South County EDC – August 1, 2017
- City of Tijuana – August 8, 2017
- Border Transportation Council - August 8, 2017
- SECTURE – August 24, 2017
- Press Briefing & Tour – September 7, 2017
- DEITAC – September 14, 2017

Social Media Collaboration Examples

 **Consulado General de los Estados Unidos en Tijuana**
May 15 at 4:45pm · 🌐

¡Cambios en el acceso peatonal este de la Garita de San Ysidro!
A partir del Lunes 22 de Mayo se reubicara el cruce de peatones en dirección norte, en la parta este de la garita de San Ysidro. Este nuevo cruce temporal de peatones estará localizado dentro del edificio Milo (al norte del actual edificio histórico de Aduanas) y ofrecerá una mayor capacidad de procesamiento de peatones, contando con ocho líneas de inspección. Este nuevo recinto reemplazará el actual cruce de peatones.
See More



Tijuana Te Quiero and 1 other Retweeted

 **SANDAG** @SANDAG · 15 Jul 2016

Congrats @US_GSAR9 on #PedWest/Virginia Ave Transit Ctr at #SanYsidro border crossing. Proud to be project partner!




🔄 8 ❤️ 13


Stakeholder Outreach Examples

 **U.S. General Services Administration Pacific Rim Region** in San Ysidro, California.
December 12, 2013 · 🌐

On Tuesday, GSA briefed stakeholders at the Community Representatives Committee meeting in San Ysidro. Special thanks to Casa Familiar for allowing us to use their space at "The Front".



 **CBP San Diego** @CBPSanDiego · 30 Jun 2016
Watch on #Periscope 📺: **Media briefing for the new Pedestrian West (PedWest) facility opening July 15 at San Ysidro**



ENDED 69 Viewers

USCustoms&BorderProt @CBPSanDiego
Media briefing for the new Pedestrian West (PedWest) facility opening July 15 at San Ysidro — San Diego, CA, Estados Unidos
pscp.tv

What Can You Do?

- Only the southbound SR-805 & I-5 roadways (below S/R 905) are affected by the roadway closure.
- If your plans include travel to Mexico by car the weekend of 9/23 – 9/25, expect delays at the Mesa de Otay LPOE.
- Consider Transit and Ped Crossing.

What Can You Do?

- Northbound traffic and pedestrian processing unaffected by the closure
- Stay Local – Play Local.
- Public Transportation (trolley & buses) will be operating additional hours.

www.gsa.gov/5realign

Questions?

Anthony Kleppe

Land Ports of Entry Program Manager

anthony.kleppe@gsa.gov

Javier Fernandez

Land Ports of Entry Communications Specialist

javier.fernandez@gsa.gov

Andra Higgs

Regional Public Affairs Officer

andra.higgs@gsa.gov

Rich Fallejo

Project Manager

richard.fallejo@gsa.gov

Ramon Riesgo

Southern Border Projects Director

ramon.riesgo@gsa.gov

